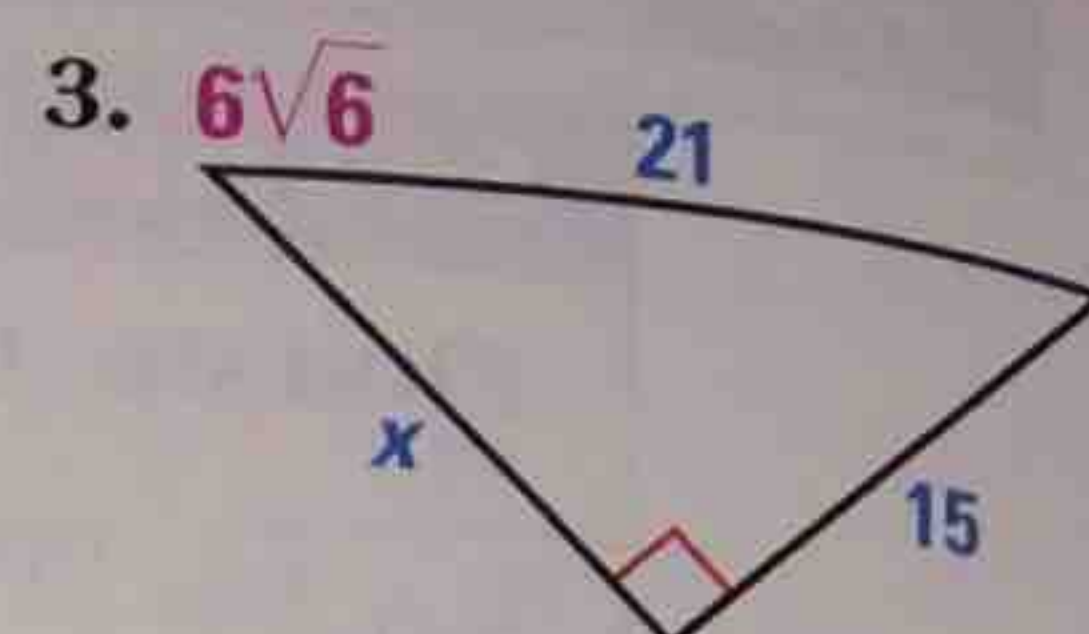
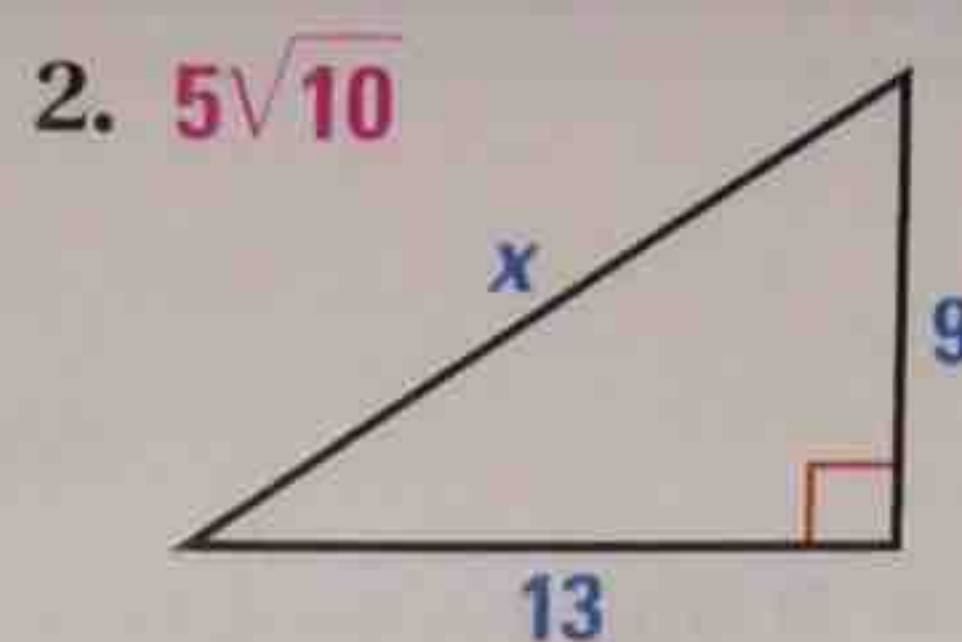
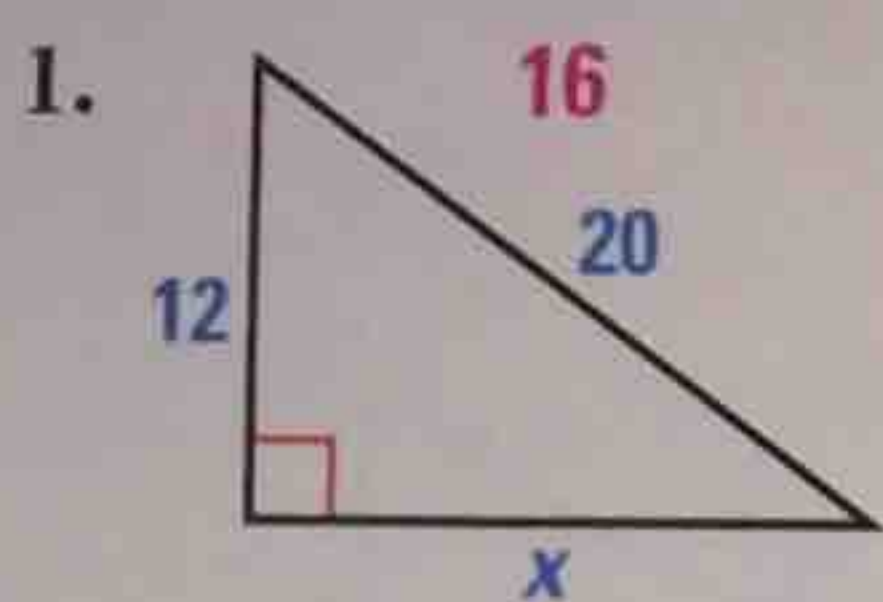


Find the value of x . Write your answer in simplest radical form.



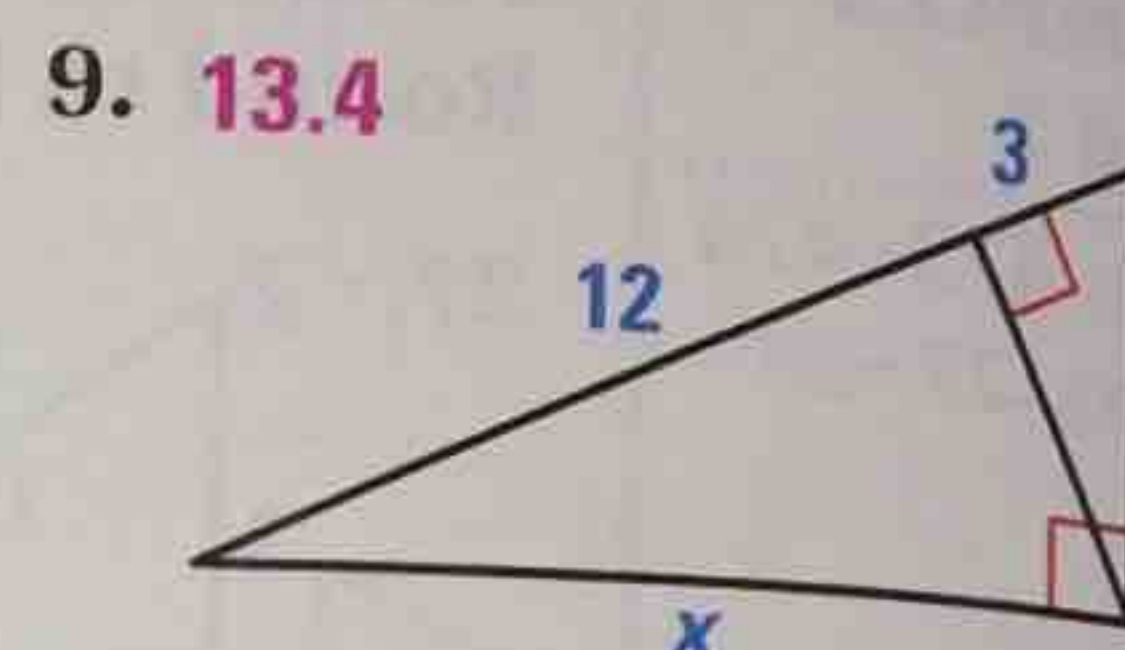
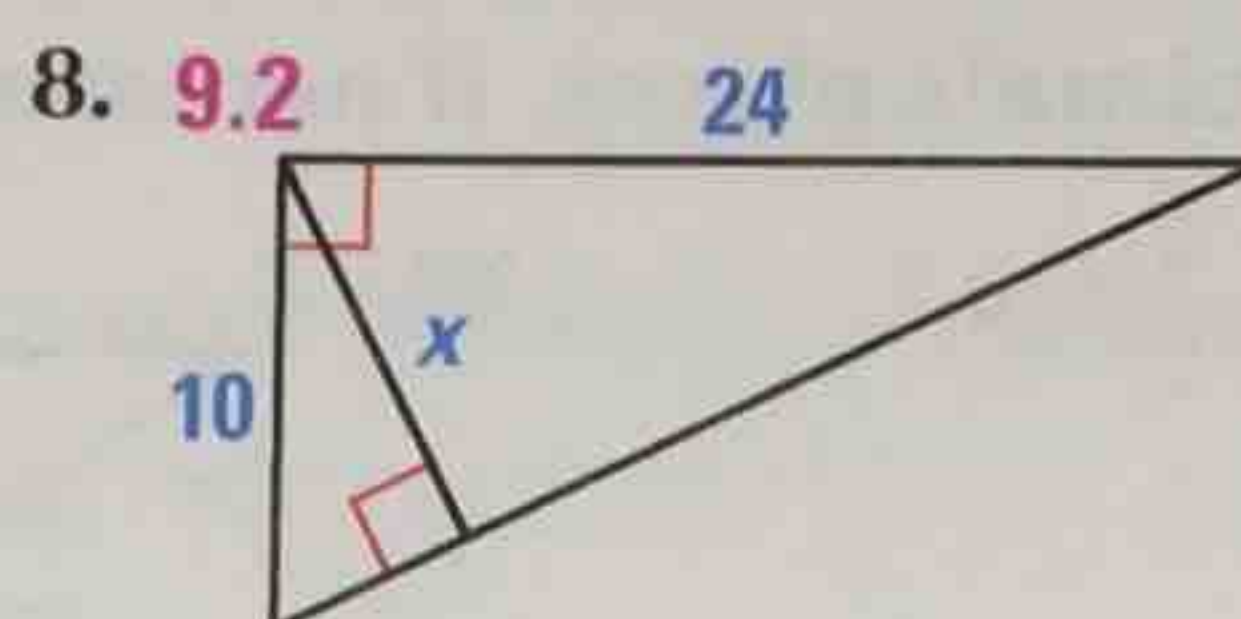
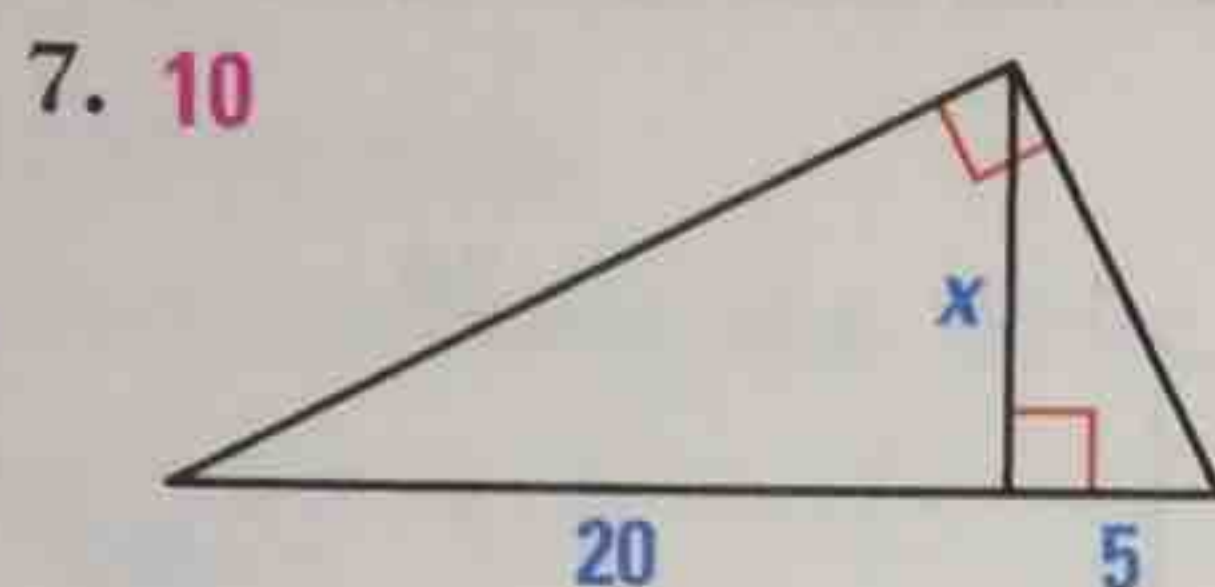
Classify the triangle as *acute*, *right*, or *obtuse*.

4. 5, 15, $5\sqrt{10}$ **right**

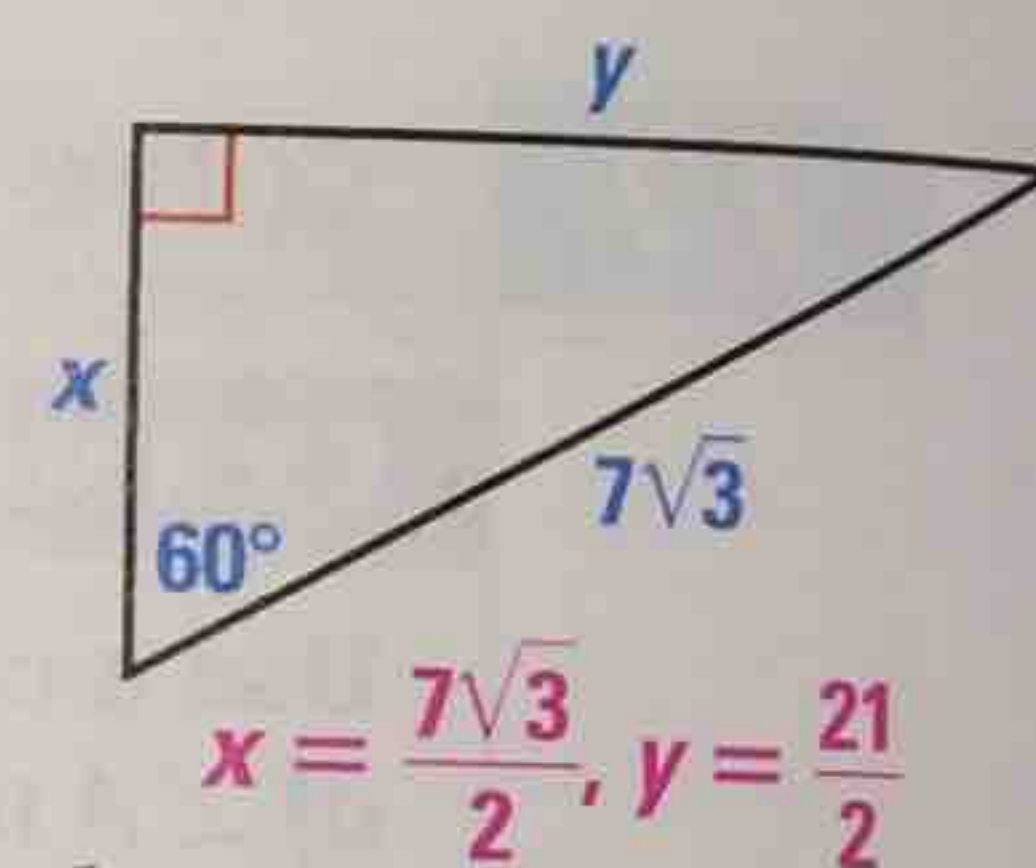
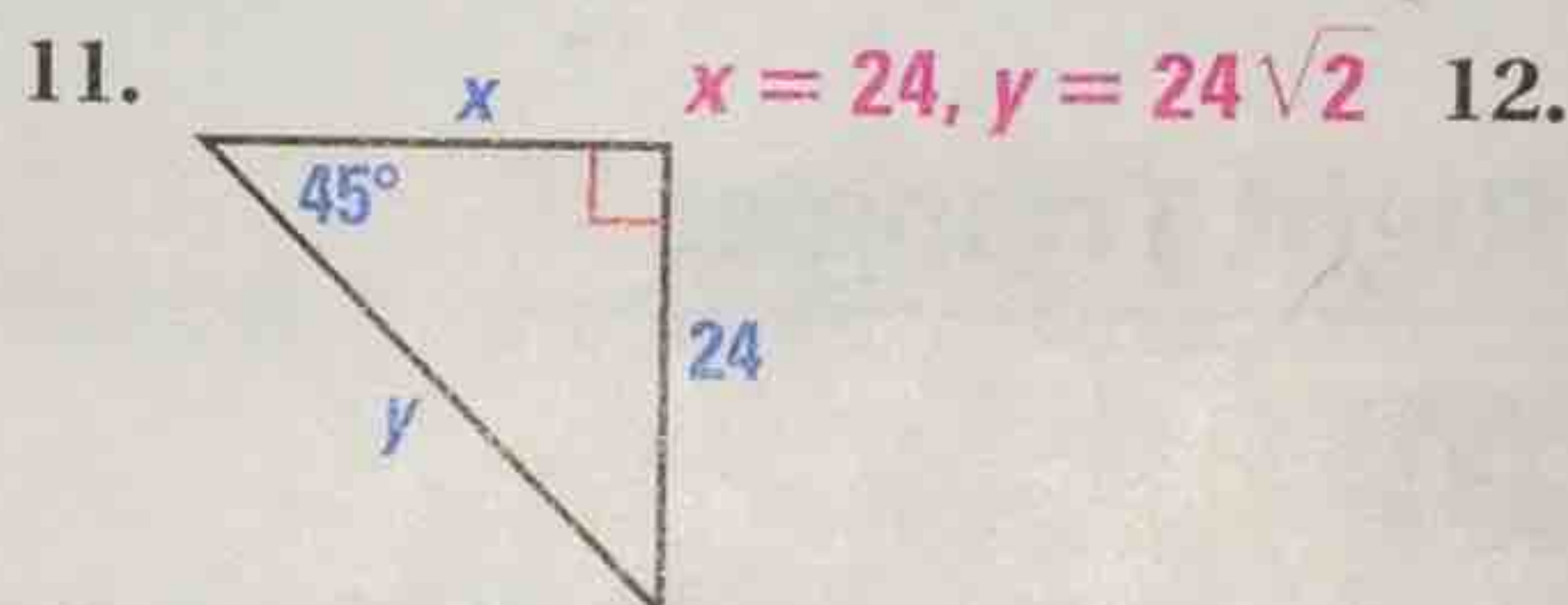
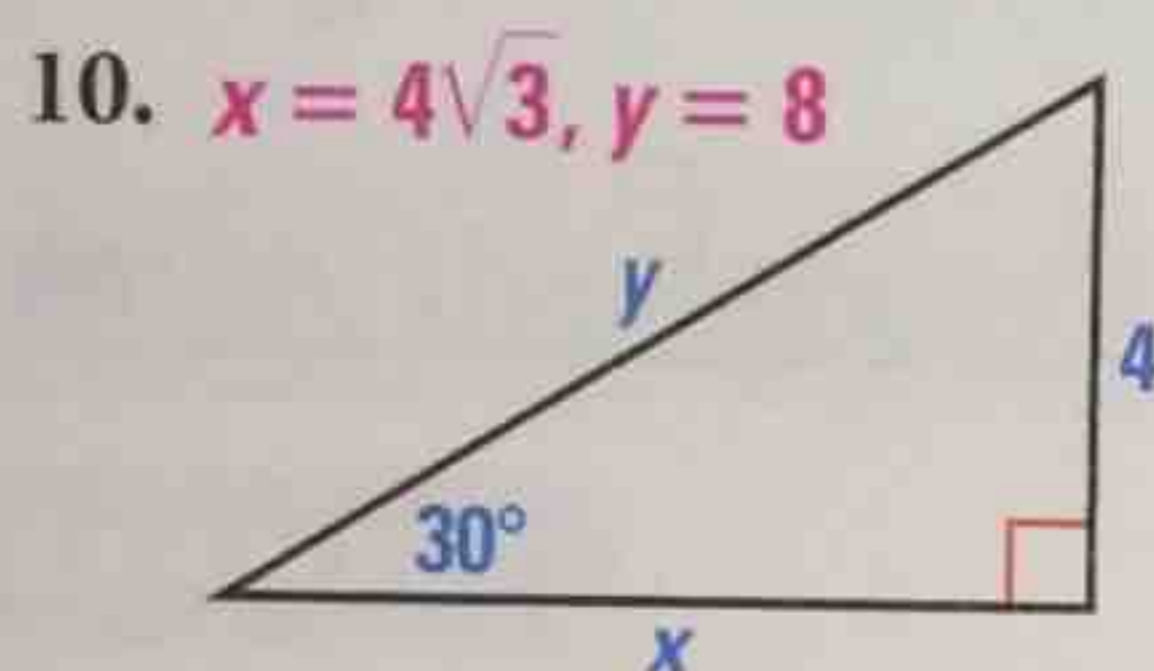
5. 4.3, 6.7, 8.2 **obtuse**

6. 5, 7, 8 **acute**

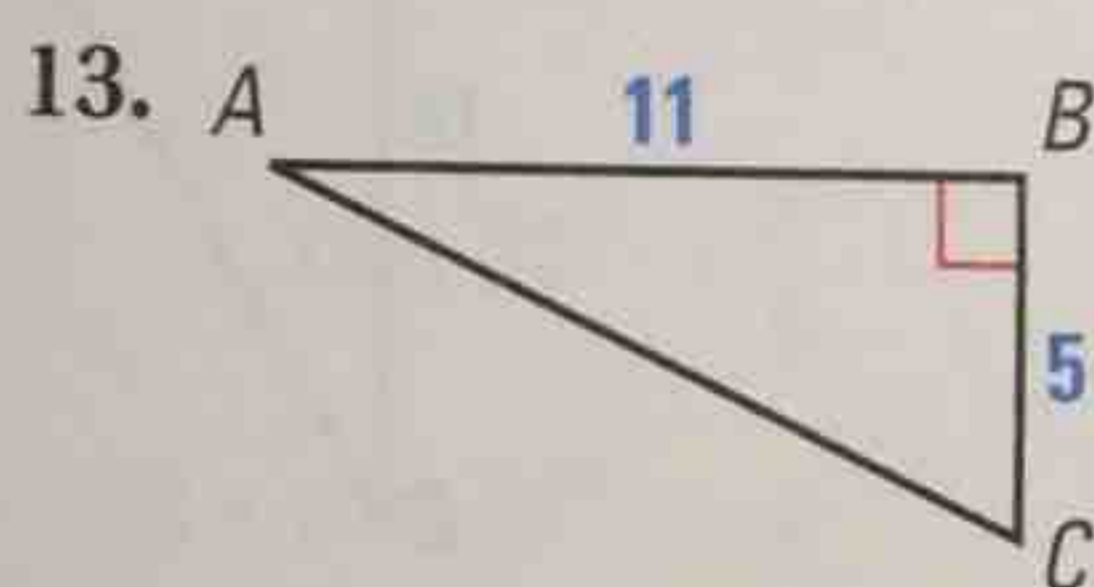
Find the value of x . Round decimal answers to the nearest tenth.



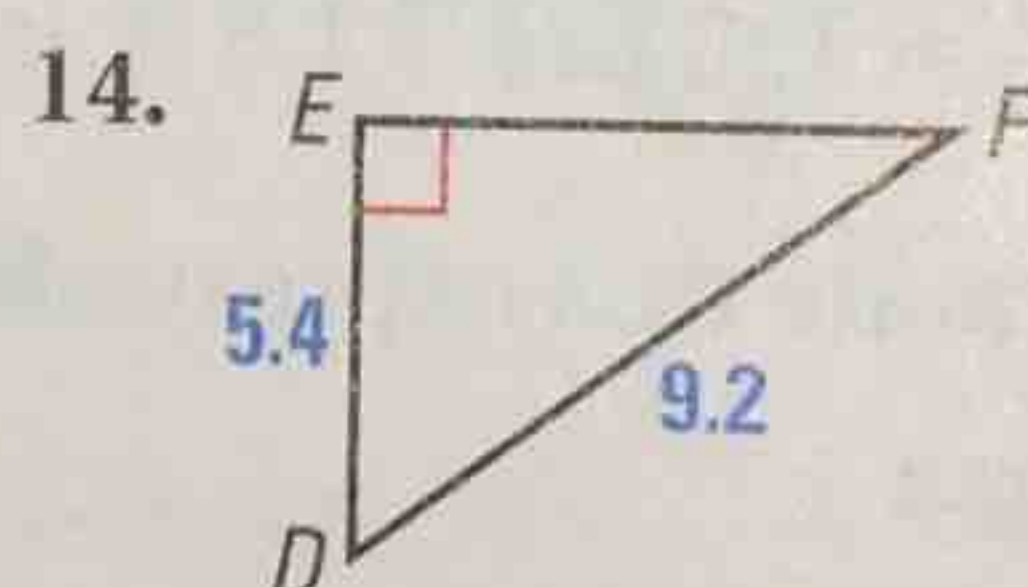
Find the value of each variable. Write your answer in simplest radical form.



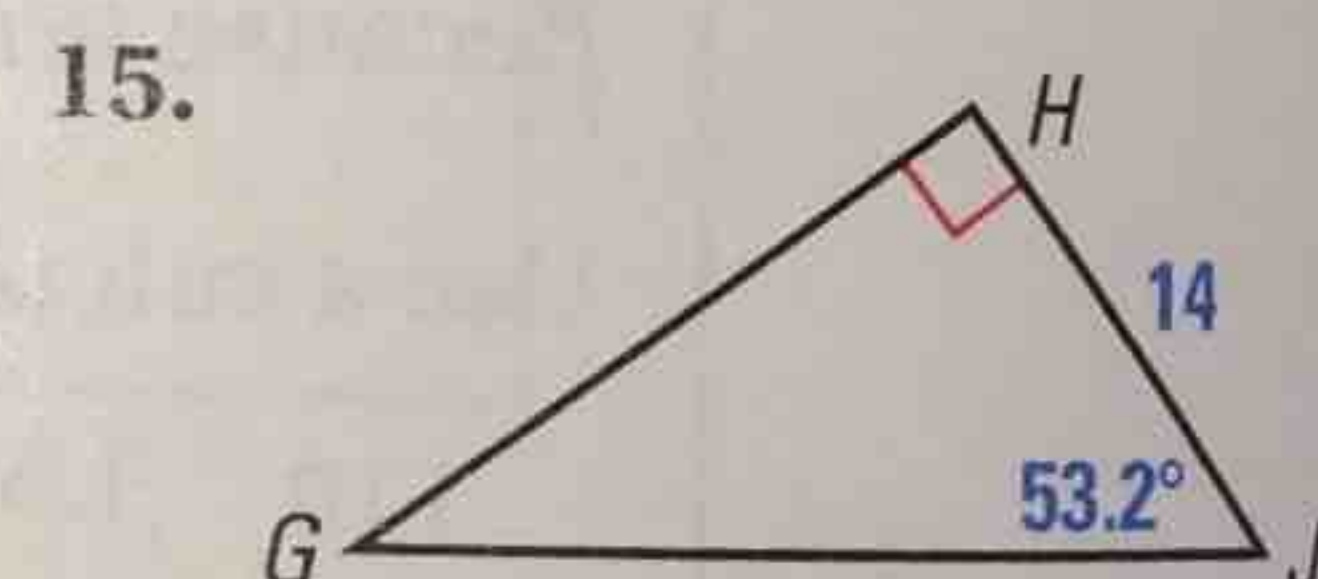
Solve the right triangle. Round decimal answers to the nearest tenth.



$A \approx 24.4^\circ, C \approx 65.6^\circ, AC \approx 12.1$



$D \approx 54.1^\circ, F \approx 35.9^\circ, EF \approx 7.4$



$G = 36.8^\circ, GH \approx 18.7, GJ \approx 23.4$

16. **FLAGPOLE** Julie is 6 feet tall. If she stands 15 feet from the flagpole and holds a cardboard square, the edges of the square line up with the top and bottom of the flagpole. Approximate the height of the flagpole.

about 43.5 ft

17. **HILLS** The length of a hill in your neighborhood is 2000 feet. The height of the hill is 750 feet. What is the angle of elevation of the hill?

about 22°

