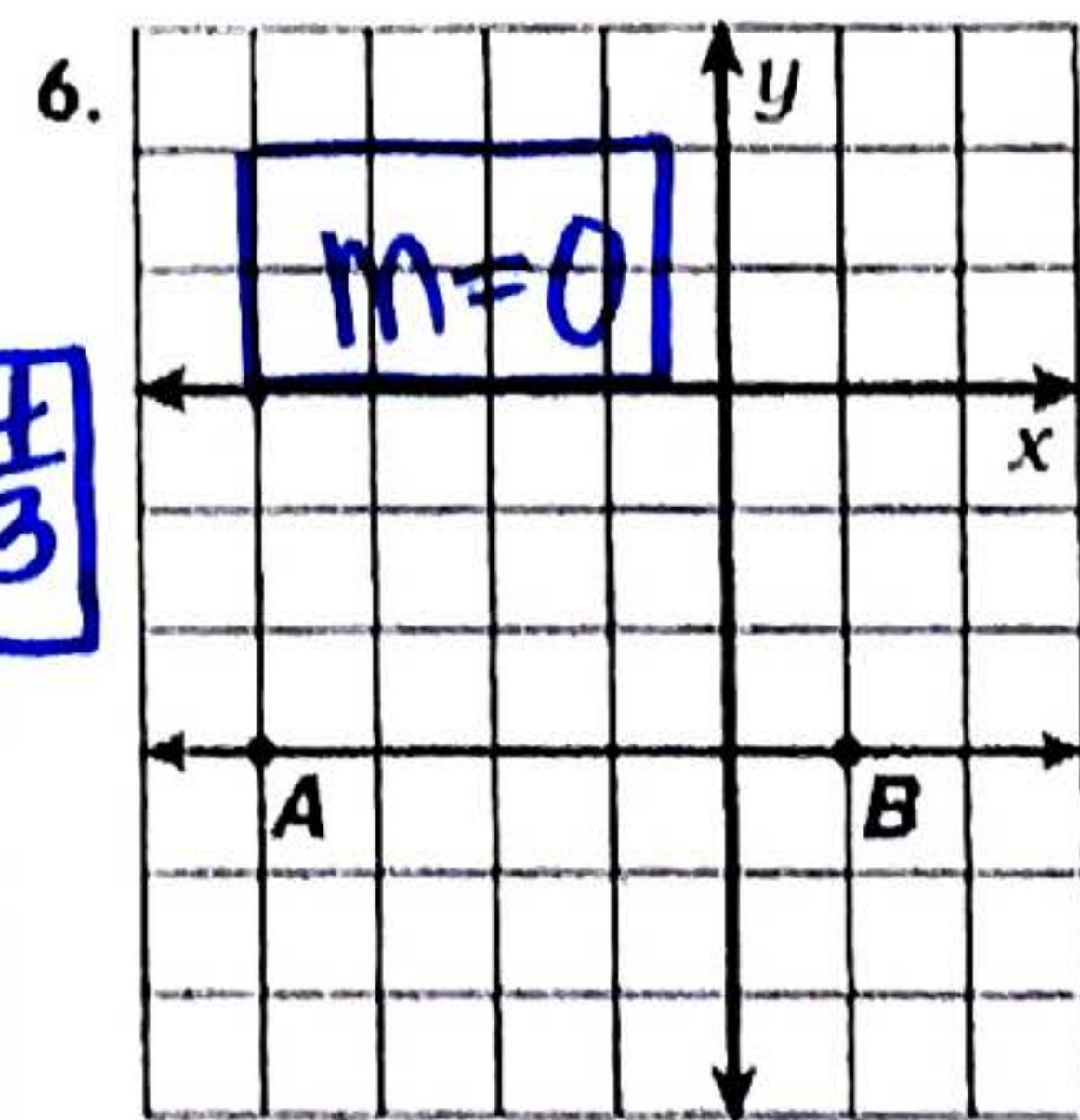
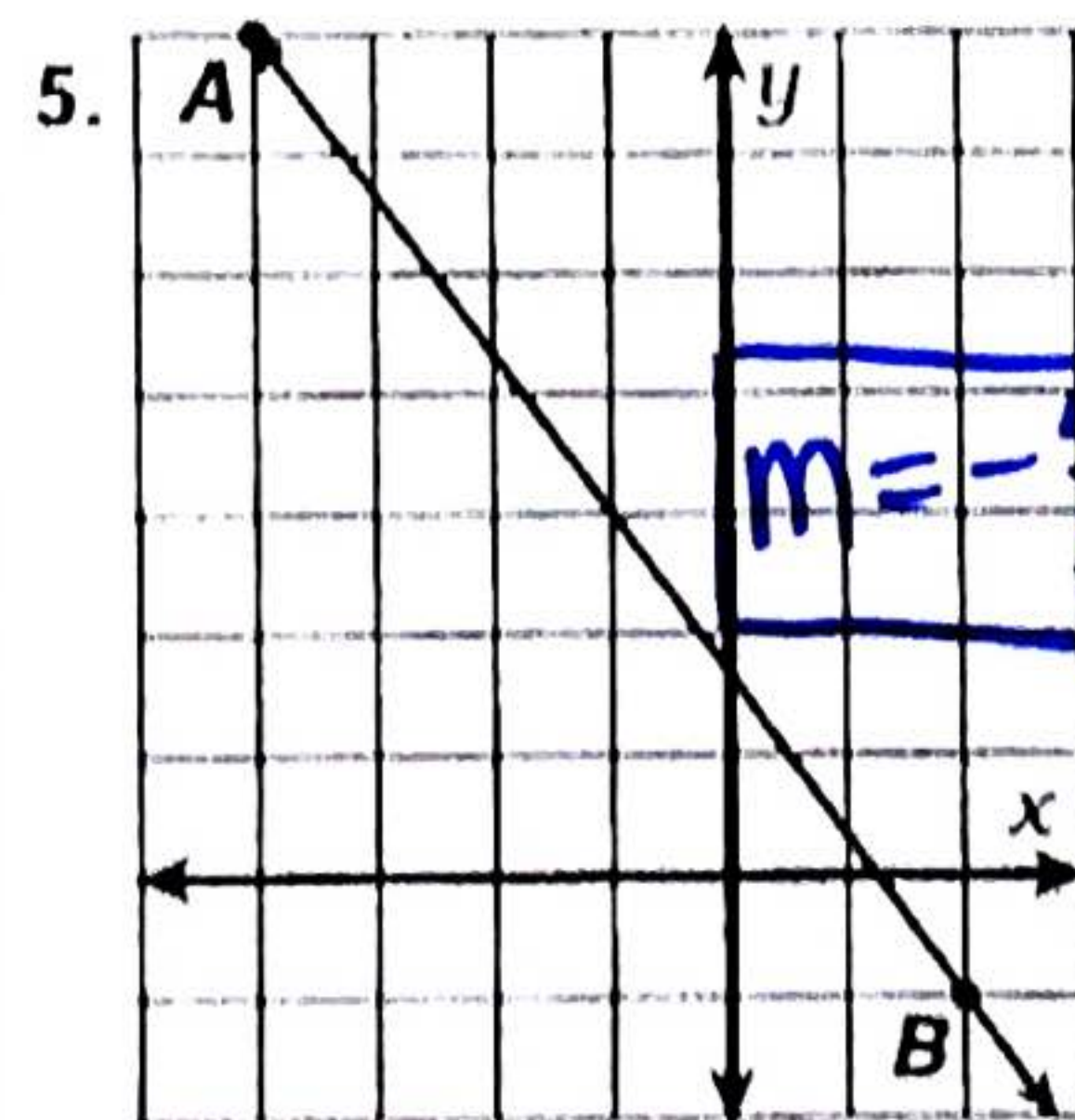
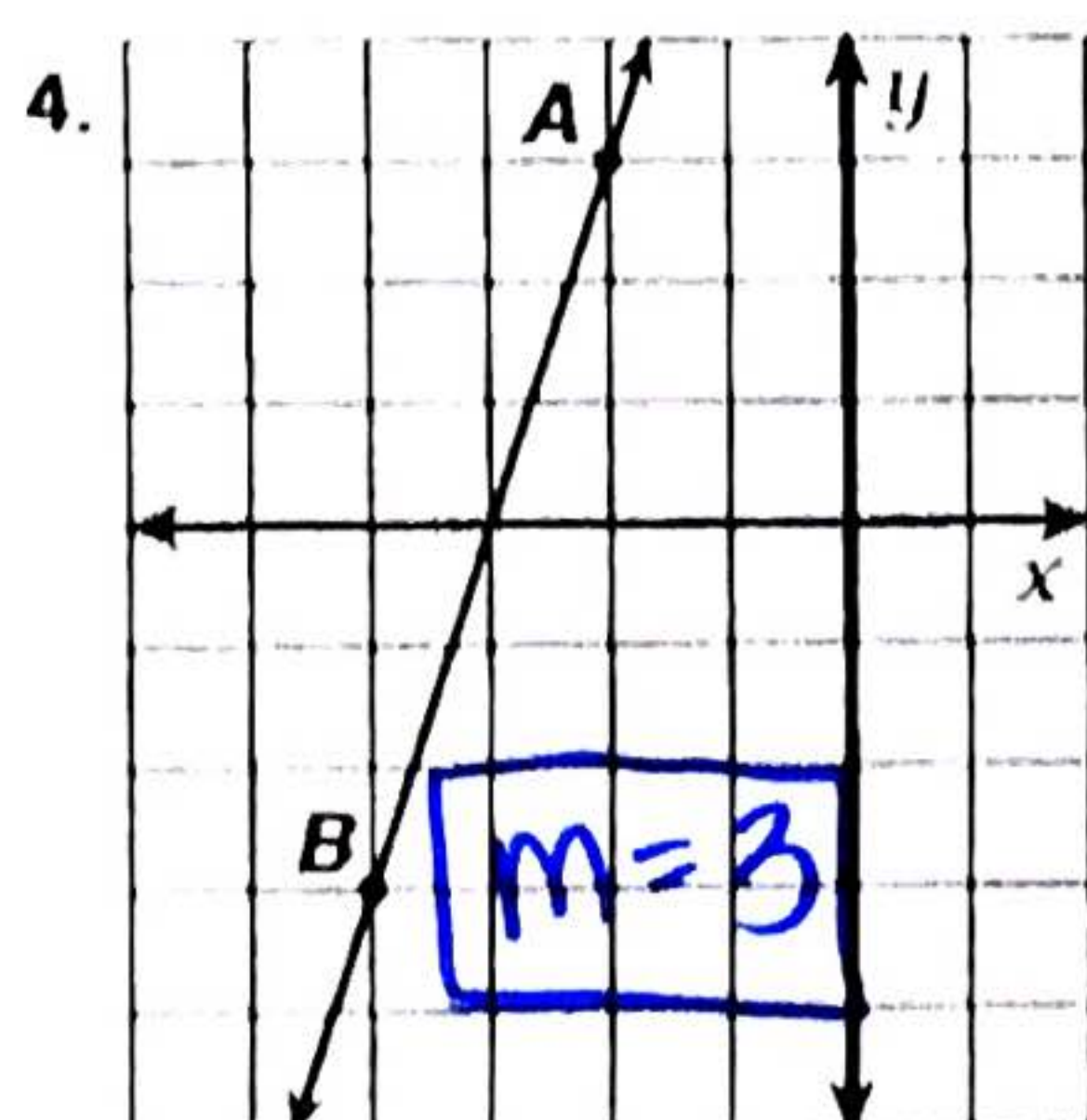
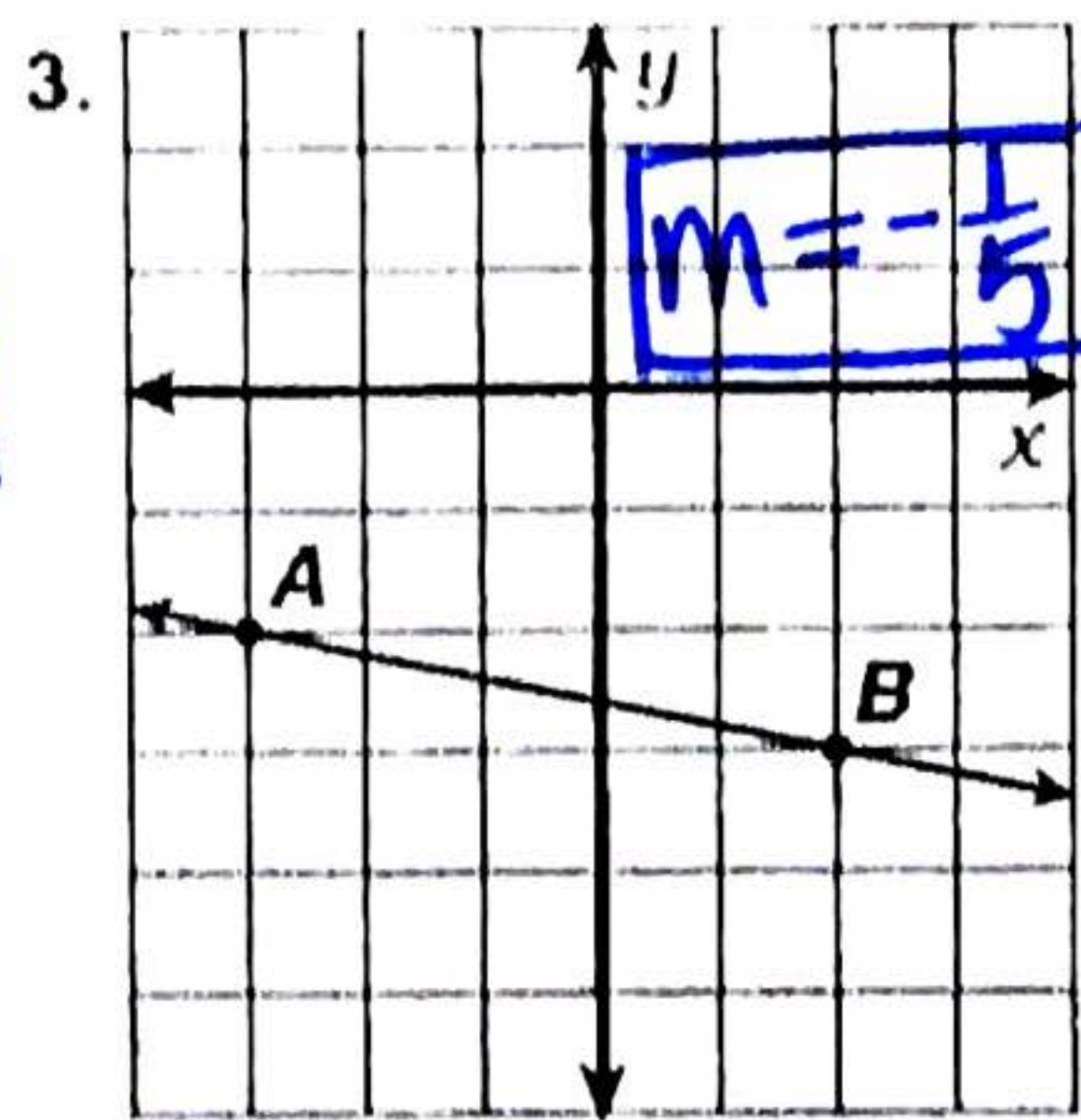
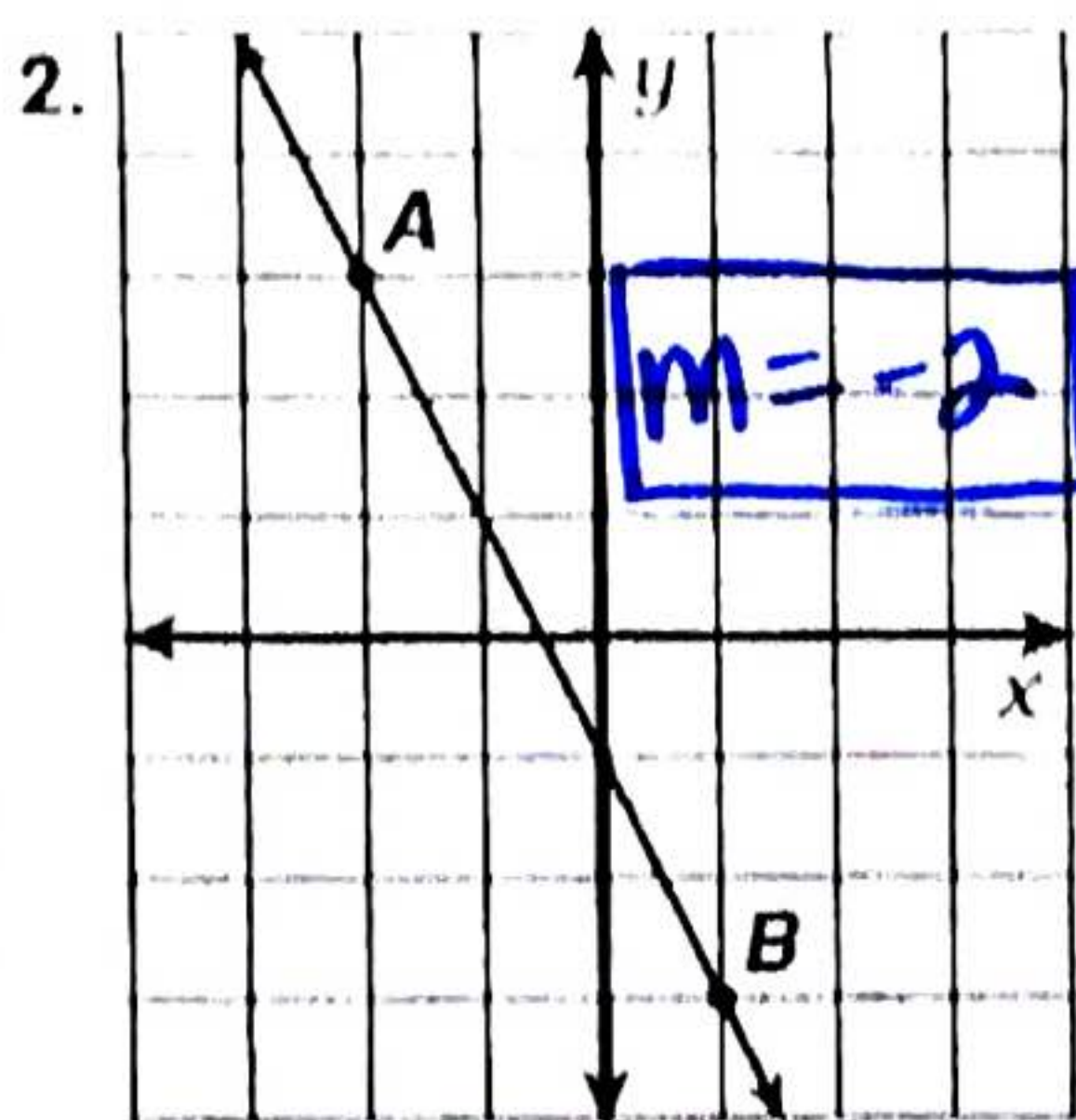
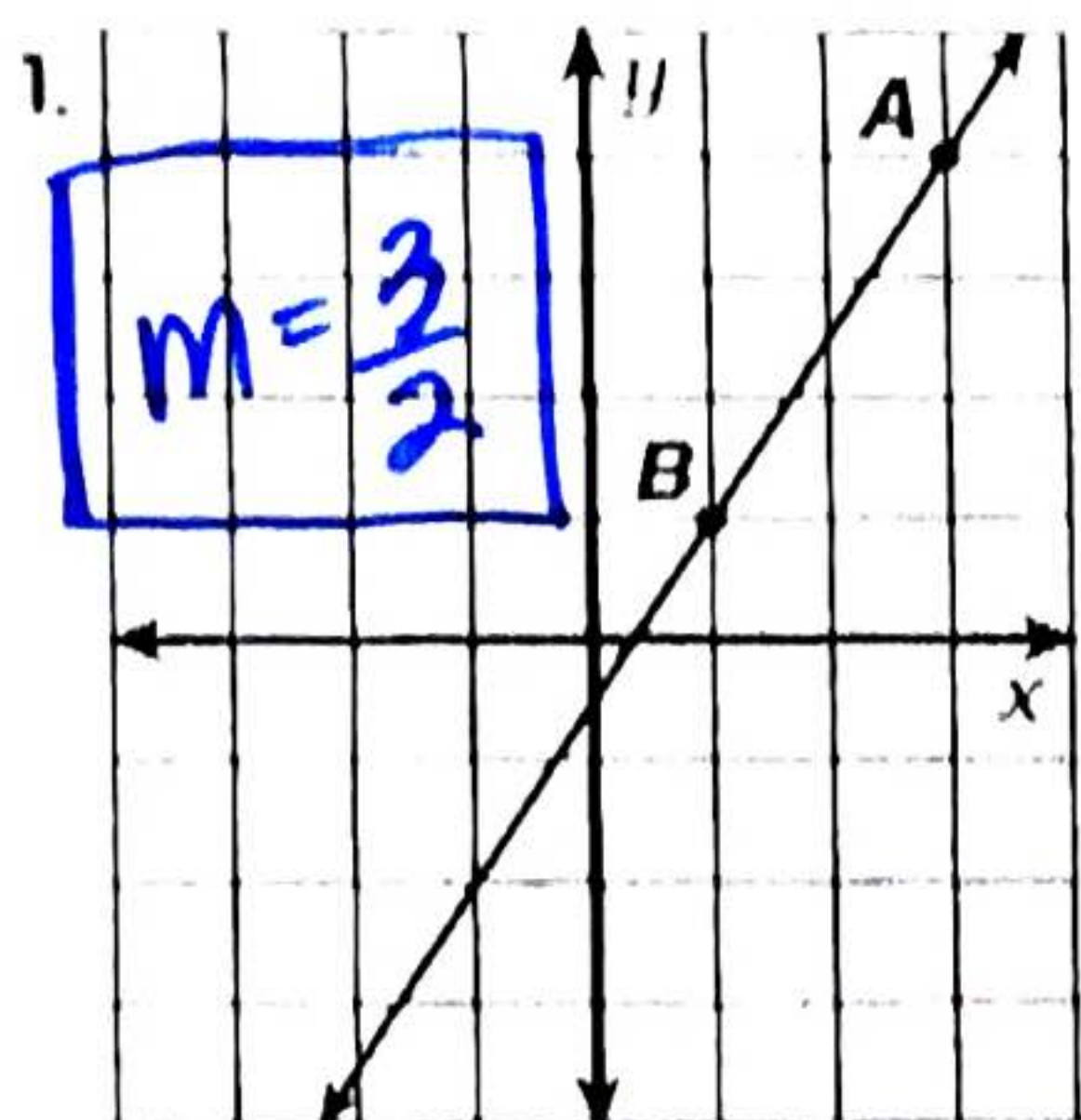


What Is Used To Repair Big, Brass Band Instruments?

Cross out the letter pair next to each correct answer. For each letter pair that you DON'T cross out, write the upper case letter in the box containing the lower case letter.

In Exercises 1-6, find the slope of \overline{AB} .



answers 1-6

i • O $-\frac{4}{3}$ ✓

e • U $-\frac{2}{3}$

g • R $\frac{3}{2}$ ✓

a • T 3 ✓

b • A $-\frac{3}{5}$

j • V -2 ✓

d • L 0 ✓

l • E $\frac{7}{2}$

h • N $-\frac{1}{5}$ ✓

In Exercises 7-18, find the slope of the line that passes through the two given points.

7. (5, 1); (8, 3) $m = \frac{2}{3}$

8. (6, 3); (1, 4) $m = -\frac{1}{5}$

f • P 1 ✓

k • U $-\frac{7}{4}$

answers 7-12

a • S $-\frac{1}{5}$ ✓

9. (2, -2); (5, 7) $m = 3$

10. (1, -6); (9, -8) $m = -\frac{1}{4}$

c • N 3 ✓

d • B $-\frac{8}{3}$

g • A 2

11. (-3, 7); (-10, 0) $m = 1$

12. (-9, 4); (-6, -4) $m = -\frac{8}{3}$

i • G $\frac{2}{5}$

h • N $\frac{2}{3}$ ✓

m • E $-\frac{1}{4}$ ✓

answers 13-18

13. (0, -3); (-2, 7) $m = -5$

14. (2, 8); (0, 3) $m = \frac{5}{2}$

j • L -3

h • R -5 ✓

d • T $\frac{5}{7}$

15. (-6, 4); (6, -5) $m = -\frac{3}{4}$

16. (-5, -9); (-1, -1) $m = 2$

f • N $\frac{4}{9}$ ✓

f • B $-\frac{2}{5}$

c • T $\frac{5}{2}$ ✓

17. (-2, 11); (7, 15) $m = \frac{4}{9}$

18. (-5, 6); (0, 0) $m = -\frac{6}{5}$

d • S $-\frac{3}{4}$ ✓

m • D $-\frac{6}{5}$ ✓

j • O 2 ✓

a b c d e f g h i j k l m

A T U B A G L U E